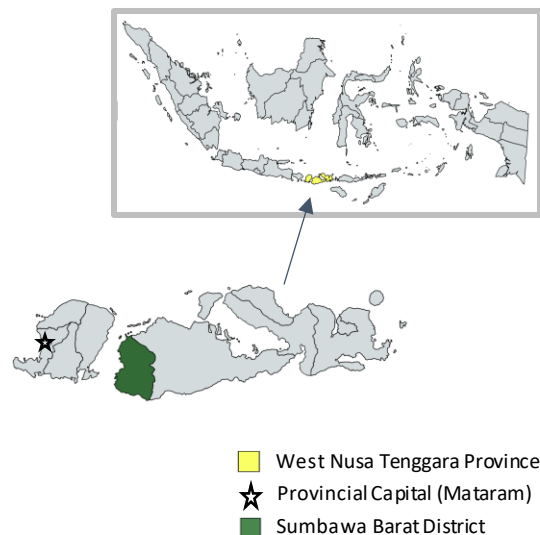


District
FactsheetSumbawa Barat District
West Nusa Tenggara Province
May 2023

Under the SP4PHC project, ThinkWell Indonesia collaborates with the Ministry of Health (MOH), local governments, and other partners to support the implementation of its primary health care (PHC) transformation reforms. These reforms aim to improve service delivery to the community by making primary health care services more integrated. Sumbawa Barat, a district in West Nusa Tenggara province, was chosen by MoH to pilot PHC transformation since 2022. With support from ThinkWell, MOH is setting up a catalytic learning platform to diagnose, finance, and improve provision of PHC services in Sumbawa Barat.

Sociodemographic Profile in 2022

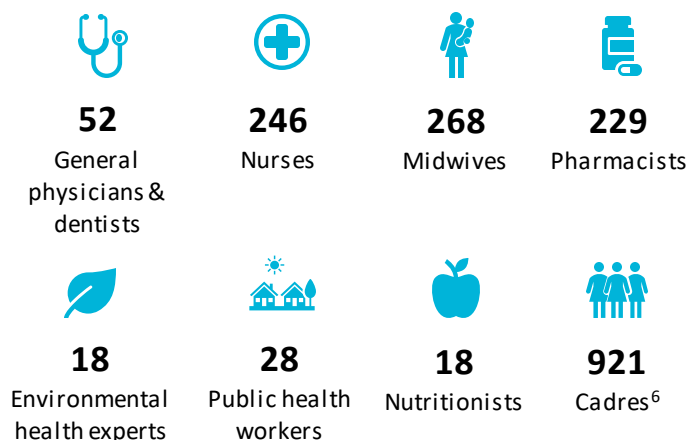
	Sumbawa Barat District	West Nusa Tenggara Province
Area (km ²)	1,849.02	18,572.32
Total Population (thousand)	151.78	5,473.70
- Women Aged 15-49 (thousand)	39.25	1,476.22
- Children Under 5 (thousand)	15.12	499.34
Annual Population Growth (%)	2.23	1.64
Life Expectancy (years)	68.74	67.07
Poverty Rate (%)	13.02	13.68
Number of Villages ¹	65	1,051
Human Development Index ² (range: 0 - 100)	72.65	69.46
Healthy Family Index ³ (range: 0 - 1)	0.253	0.150
Public Health Development Index ⁴ (range: 0 - 1)	0.696	0.619
Total Population per Doctor ⁵	1,977.26	2,680.15



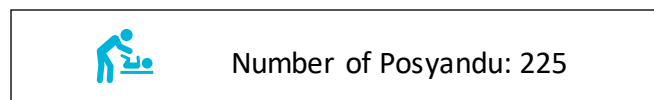
Source: Aplikasi Keluarga Sehat 2023; Badan Pusat Statistik Sumbawa Barat 2023; Badan Pusat Statistik West Nusa Tenggara 2022 & 2023; Kementerian Dalam Negeri 2019; Lembaga Penerbit Badan Penelitian dan Pengembangan Kesehatan 2019; and authors' estimates

Service Delivery Indicators

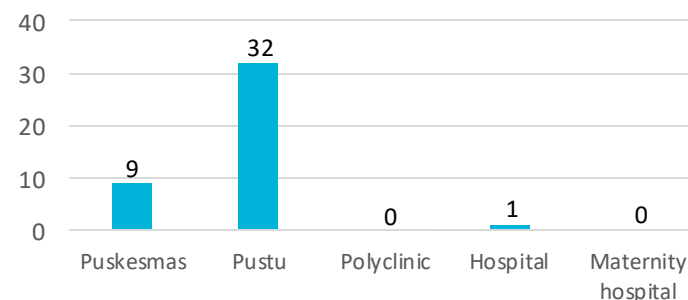
Health Workforce by Type (2021)



Source: Aplikasi Sarana, Prasarana & Alat Kesehatan 2022; Badan Pusat Statistik Kabupaten Sumbawa Barat 2023; Dashboard Data Desa Direktorat Jenderal Bina Pemerintahan 2023; Survei Potensi Desa 2021



Number of Health Facilities in 2021



PHC facilities

Secondary facilities

Acronyms

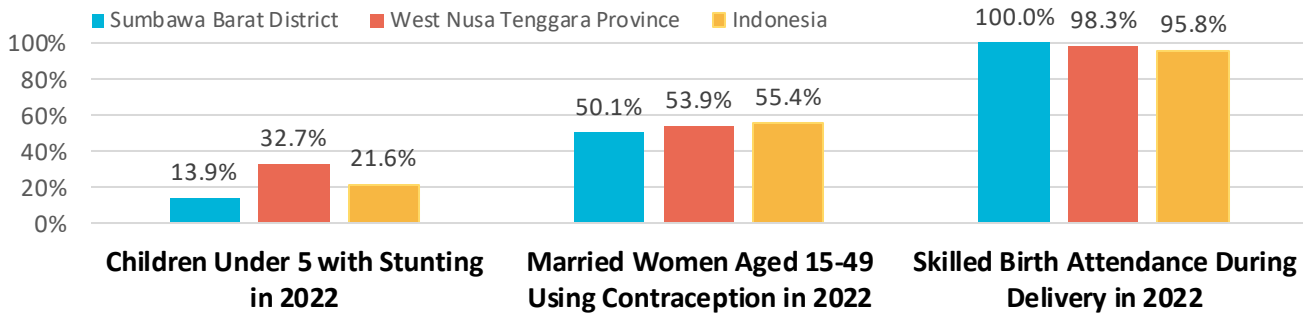
FP: Family Planning; **JKN:** Jaminan Kesehatan Nasional (National Health Insurance); **MNCH:** Maternal, Neonatal, and Child Health; **PBI:** Penerima Bantuan Iuran (members who are listed as poor and vulnerable whose insurance contribution is subsidized by the government); **PHC:** Primary Health Care; **Posyandu:** Pos Pelayanan Terpadu (Integrated Service Post); **Puskesmas:** Pusat Kesehatan Masyarakat (Community Health Center); **Pustu:** Puskesmas Pembantu (Auxiliary Community Health Center)

Strategic Purchasing for Primary Health Care (SP4PHC) is a project that ThinkWell implements in partnership with government agencies and local research institutions in six countries (Burkina Faso, Indonesia, Kenya, the Philippines, Pakistan, and Uganda) with support from the Bill & Melinda Gates Foundation.

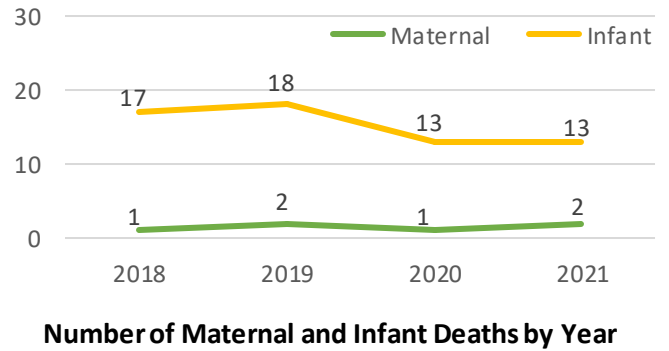
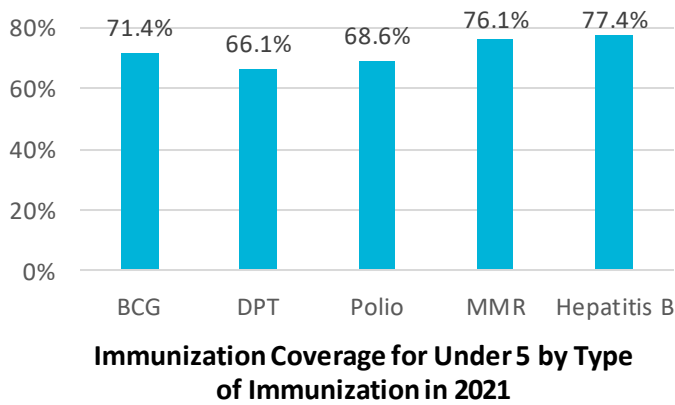
Health Outputs and Outcomes



Family Planning and Maternal, Newborn, and Child Health Indicators



Source: Badan Pusat Statistik Sumbawa Barat 2022; Badan Pusat Statistik Indonesia 2023; Badan Pusat Statistik West Nusa Tenggara 2023; Dinas Kesehatan Sumbawa Barat 2023; Studi Status Gizi Indonesia 2022

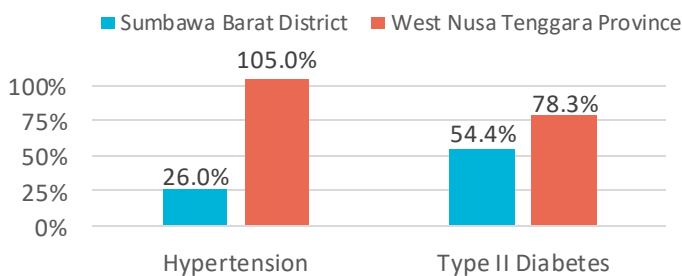


Communicable & Non-communicable Disease Indicators

706
Tuberculosis cases detected in 2021

94.1%
Tuberculosis treatment success rate in 2021

Treatment Coverage for Specified Non-communicable Diseases in 2021

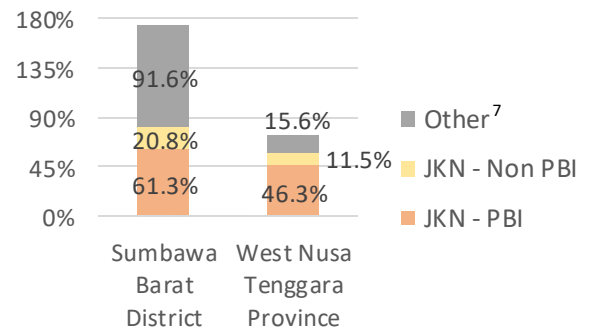


Source: Badan Pusat Statistik West Nusa Tenggara 2023, Dinas Kesehatan West Nusa Tenggara 2019

Health Financing Indicators

IDR 691,988 ≈ US\$47.72
District health budget per capita in 2021

Population with Health Insurance by Type of Health Insurance in 2022



Source: Badan Pusat Statistik West Nusa Tenggara 2023; Dinas Kesehatan Sumbawa Barat 2022; and Author's estimates

¹ No data in 2022, so data in 2021 was reported instead.

² Component of Human Development Index comprise life expectancy at birth, expected years of schooling, mean years of schooling, and per capita income.

³ Healthy Family Index is a composite indicator comprising of 12 health indicators, including access to sanitation and national health insurance, FP and MNCH indicators, and disease treatment coverage. The index is calculated from routine facility Health Management Information System reports; data from April 10, 2023, was reported.

⁴ Public Health Development Index is composite indicator comprising of 24 health indicators, including prevalence of communicable and non-communicable diseases, service coverage, and proportion of healthy behaviors. The index is calculated from periodic survey data. No data in 2022, hence data in 2018 was reported instead.

⁵ No data in 2022, so data in 2020 was reported instead.

⁶ Data in 2022 was reported.

⁷ Other insurances comprised of regional health insurance, private insurance, and employment-based insurance. The high percentage of other insurance in Sumbawa Barat is driven by regional health insurance, which may not have been integrated with JKN.