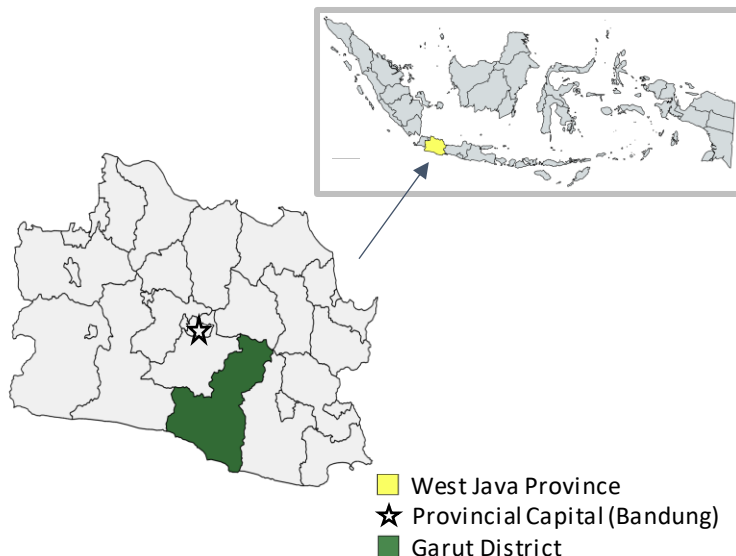


District
FactsheetGarut District
West Java Province
May 2023

Under the SP4PHC project, ThinkWell Indonesia collaborates with the Ministry of Health (MOH), local governments, and other partners to support the implementation of its primary health care (PHC) transformation reforms. These reforms aim to improve service delivery to the community by making primary health care services more integrated. Garut, a district in West Java province, was chosen by MoH to pilot PHC transformation since 2022. With support from ThinkWell, MOH is setting up a catalytic learning platform to diagnose, finance, and improve provision of PHC services in Garut.

Sociodemographic Profile in 2022

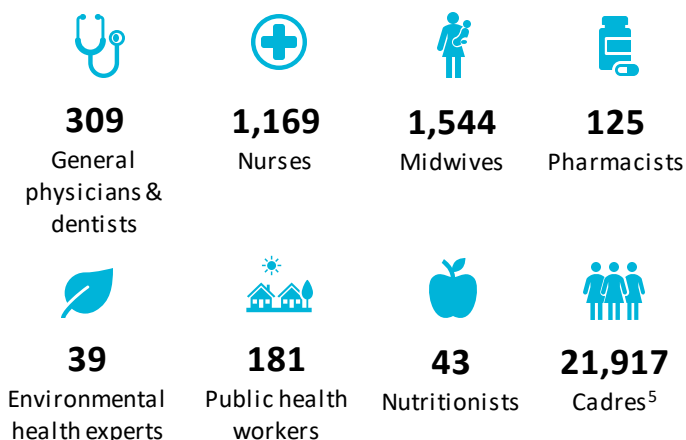
	Garut District	West Java Province
Area (km ²)	3,074.07	35,377.76
Total Population (thousand)	2,627.22	49,405.81
- Women Aged 15-49 (thousand)	695.16	13,372.32
- Children Under 5 (thousand)	238.75	3,955.70
Annual Population Growth (%)	0.86	1.33
Life Expectancy (years)	71.59 ¹	73.52
Poverty Rate (%)	10.42	8.06
Number of Villages	442	5,957
Human Development Index ²	67.41	73.12
Healthy Family Index ³	0.097	0.182
Public Health Development Index ⁴	0.565	0.625
Total Population per Doctor	4,235	2,060



Source: Aplikasi Keluarga Sehat 2023; Badan Pusat Statistik Garut 2023; Badan Pusat Statistik Jawa Barat 2022 & 2023; Kementerian Dalam Negeri 2019; Lembaga Penerbit Badan Penelitian dan Pengembangan Kesehatan 2019; and authors' estimates

Service Delivery Indicators

Health Workforce by Type (2021)

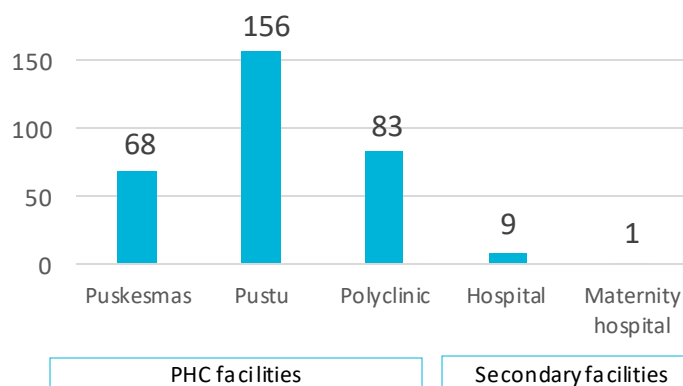


Source: Aplikasi Sarana, Prasarana & Alat Kesehatan 2022; Badan Pusat Statistik Kabupaten Garut 2023; Dinas Pemberdayaan Masyarakat dan Desa Jawa Barat 2021; Survei Potensi Desa 2021



Number of Posyandu: 4,256

Number of Health Facilities in 2021



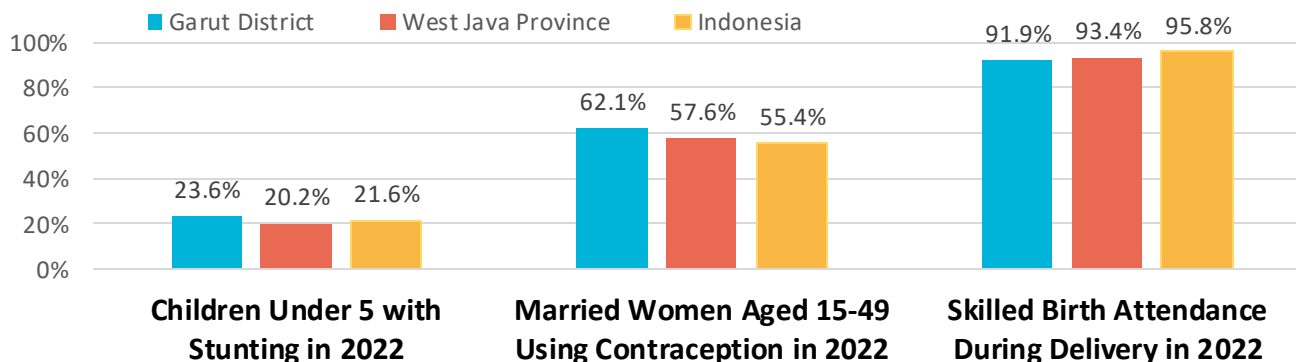
Acronyms

FP: Family Planning; **JKN:** Jaminan Kesehatan Nasional (National Health Insurance); **MNCH:** Maternal, Neonatal, and Child Health; **PBI:** Penerima Bantuan Iuran (members who are listed as poor and vulnerable whose insurance contribution is subsidized by the government); **PHC:** Primary Health Care; **Posyandu:** Pos Pelayanan Terpadu (Integrated Service Post); **Puskesmas:** Pusat Kesehatan Masyarakat (Community Health Center); **Pustu:** Puskesmas Pembantu (Auxiliary Community Health Center)

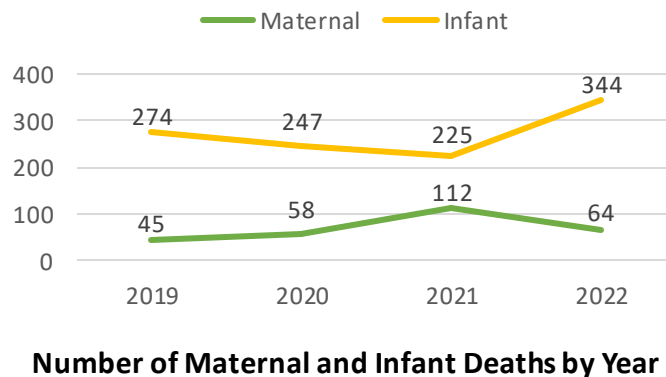
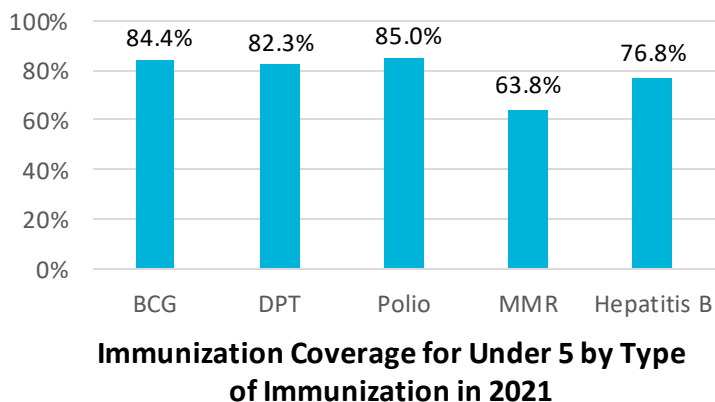
Health Outputs and Outcomes



Family Planning and Maternal, Newborn, and Child Health Indicators



Source: Badan Pusat Statistik Garut 2022; Badan Pusat Statistik Indonesia 2023; Badan Pusat Statistik Jawa Barat 2023; Dinas Kesehatan Garut 2023; Studi Status Gizi Indonesia 2022

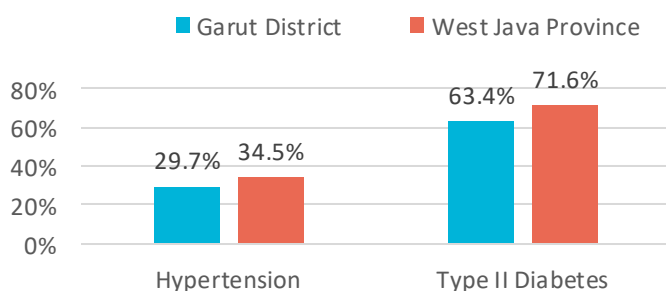


Communicable & Non-communicable Disease Indicators

4,855
Tuberculosis cases detected in 2022

84.2%
Tuberculosis treatment success rate in 2022

Treatment Coverage for Specified Non-communicable Diseases in 2021

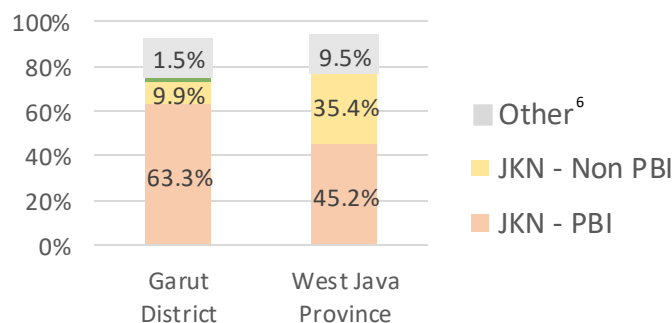


Source: Badan Pusat Statistik Jawa Barat 2023, Dinas Kesehatan Jawa Barat 2022

Health Financing Indicators

IDR 192,927 ≈ US\$13.31
District health budget per capita in 2021

Population with Health Insurance by Type of Health Insurance in 2021



Source: Badan Pusat Statistik Jawa Barat 2023; Dinas Kesehatan Jawa Barat 2022; Kantor Bupati Garut 2021; and Authors' estimates

¹ No data in 2022, hence data in 2021 was reported instead.

² Component of Human Development Index comprise life expectancy at birth, expected years of schooling, mean years of schooling, and per capita income

³ Healthy Family Index is composite indicator comprising of 12 health indicators, including access to sanitation and national health insurance, FP and MNCH indicators, and disease treatment coverage. The index is calculated from routine facility Health Management Information System reports; data from April 10, 2023, was reported.

⁴ Public Health Development Index is composite indicator comprising of 24 health indicators, including prevalence of communicable and non-communicable diseases, service coverage, and proportion of healthy behaviors. The index is calculated from periodic survey data. No data in 2022, hence data in 2018 was reported instead.

⁵ No data in 2021, hence data in 2020 was reported instead.

⁶ Other insurances comprised of regional health insurance, private insurance, and employment-based insurance