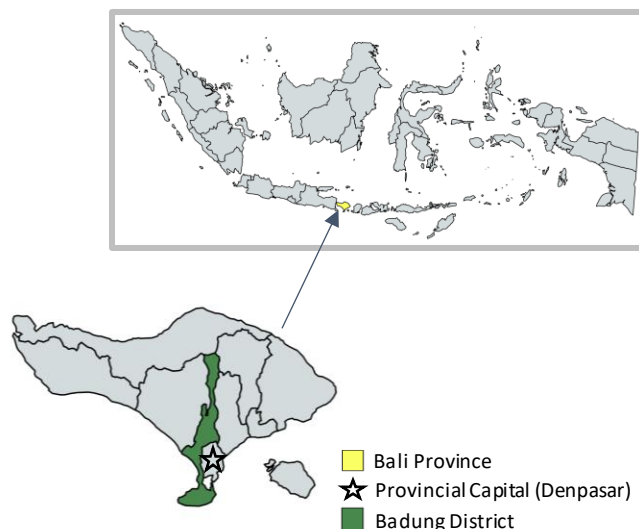


District  
FactsheetBadung District  
Bali Province  
May 2023

Under the SP4PHC project, ThinkWell Indonesia collaborates with the Ministry of Health (MOH), local governments, and other partners to support the implementation of its primary health care (PHC) transformation reforms. These reforms aim to improve service delivery to the community by making primary health care services more integrated. With support from ThinkWell, MOH is setting up a catalytic learning platform to diagnose, finance, and improve provision of PHC services in Badung, a district in Bali Province.

## Sociodemographic Profile in 2022

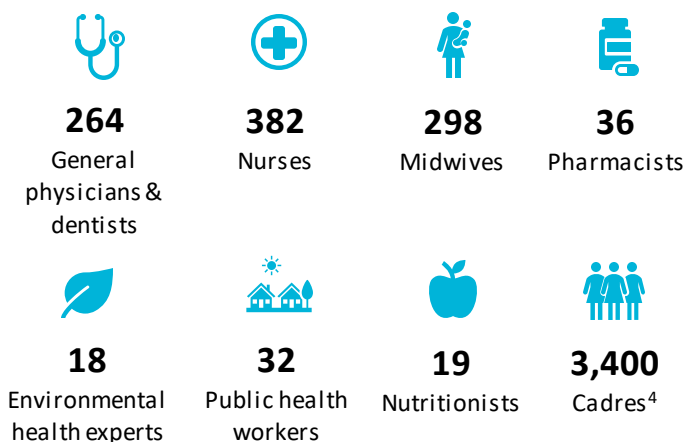
	Badung District	Bali Province
<b>Area (km<sup>2</sup>)</b>	418.62	5,780.06
<b>Total Population (thousand)</b>	549.53	4,415.10
- Women Aged 15-49 (thousand)	150.02	1,154.30
- Children Under 5 (thousand)	36.52	302.70
<b>Annual Population Growth (%)</b>	0.05	1.29
<b>Life Expectancy (years)</b>	75.51	72.60
<b>Poverty Rate (%)</b>	2.53	4.57
<b>Number of Villages</b>	62	716
<b>Human Development Index<sup>1</sup></b> (range: 0-100)	82.13	76.44
<b>Healthy Family Index<sup>2</sup></b> (range: 0-1)	0.565	0.390
<b>Public Health Development Index<sup>3</sup></b> (range: 0-1)	0.717	0.689
<b>Total Population per Doctor</b>	1,000	1,085



Source: Aplikasi Keluarga Sehat 2023; Badan Pusat Statistik Badung 2023; Badan Pusat Statistik Bali 2022 & 2023; Kementerian Dalam Negeri 2019; Lembaga Penerbit Badan Penelitian dan Pengembangan Kesehatan 2019; and authors' estimates

## Service Delivery Indicators

## Health Workforce by Type (2021)

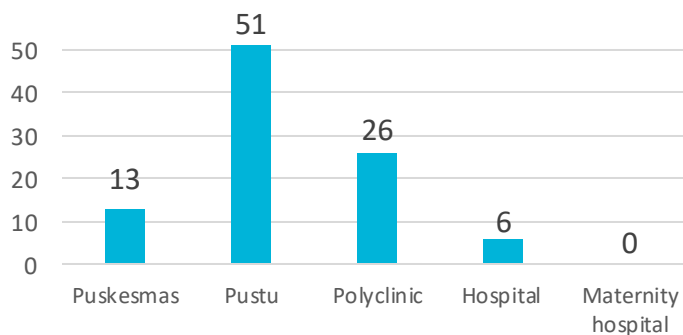


Source: Aplikasi Sarana, Prasarana & Alat Kesehatan 2022; Badan Pusat Statistik Kabupaten Badung 2023; Dashboard Data Desa Direktorat Jenderal Bina Pemerintahan 2023; Survei Potensi Desa 2021



Number of Posyandu: 558

## Number of Health Facilities in 2021



PHC facilities

Secondary facilities

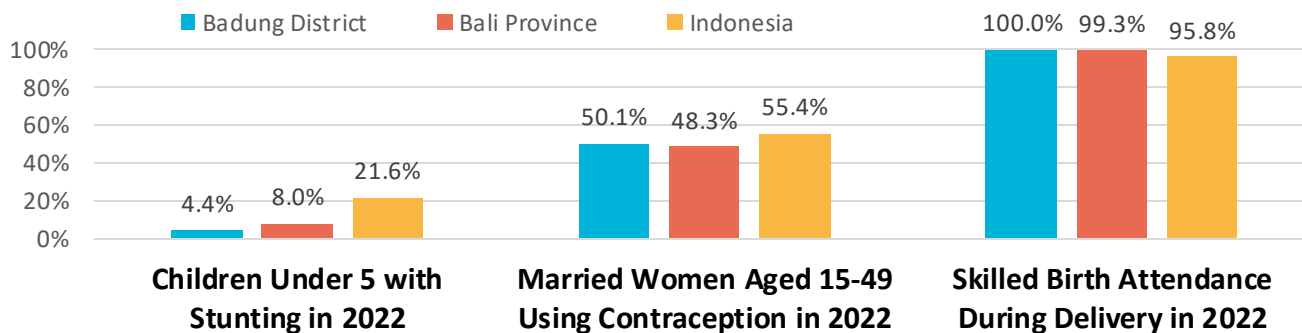
## Acronyms

**FP:** Family Planning; **JKN:** Jaminan Kesehatan Nasional (National Health Insurance); **MNCH:** Maternal, Neonatal, and Child Health; **PBI:** Penerima Bantuan Iuran (members who are listed as poor and vulnerable whose insurance contribution is subsidized by the government); **PHC:** Primary Health Care; **Posyandu:** Pos Pelayanan Terpadu (Integrated Service Post); **Puskesmas:** Pusat Kesehatan Masyarakat (Community Health Center); **Pustu:** Puskesmas Pembantu (Auxiliary Community Health Center)

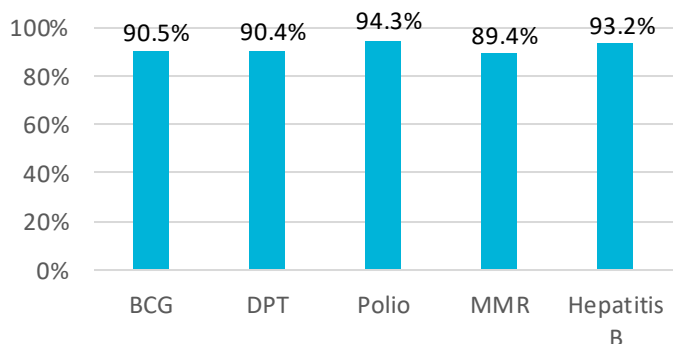
# Health Outputs and Outcomes



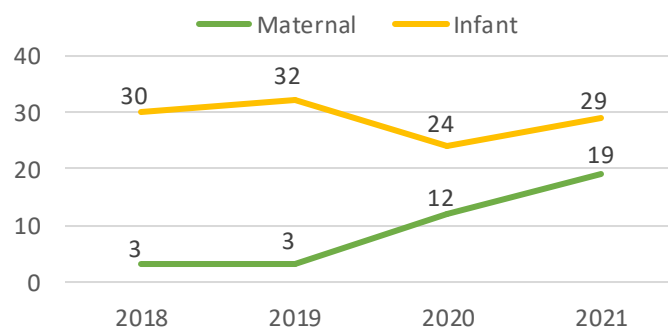
## Family Planning and Maternal, Newborn, and Child Health Indicators



Source: Badan Pusat Statistik Badung 2022; Badan Pusat Statistik Indonesia 2023; Badan Pusat Statistik Bali 2023; Dinas Kesehatan Badung 2023; Studi Status Gizi Indonesia 2022



Immunization Coverage for Under 5 by Types of Immunization in 2021



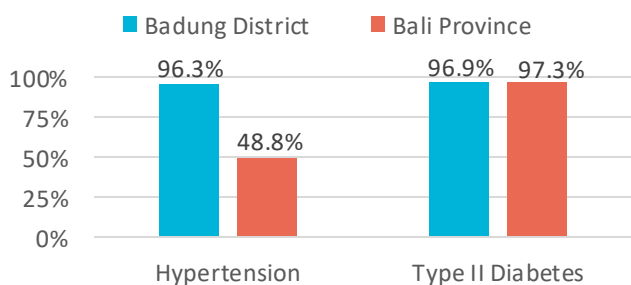
Number of Maternal and Infant Mortality by Year

## Communicable & Non-communicable Disease Indicators

**397** Tuberculosis cases detected in 2021

**85.6%** Tuberculosis treatment success rate in 2021

### Treatment Coverage for Specified Non-communicable Diseases in 2021

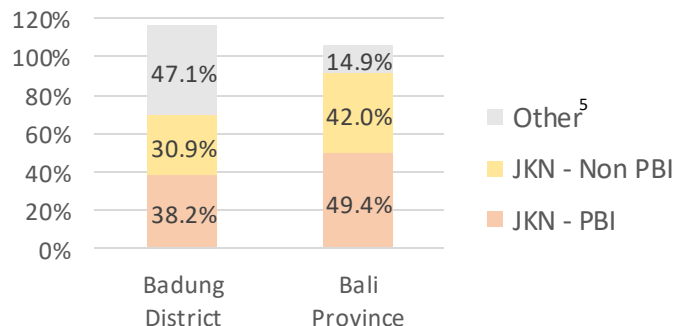


Source: Badan Pusat Statistik Bali 2023, Dinas Kesehatan Bali 2022

## Health Financing Indicators

**IDR 1,213,177 ≈ US\$83.67** District health budget per capita in 2020

### Population with Health Insurance by Type of Health Insurance in 2021



Source: Badan Pusat Statistik Bali 2023; Dinas Kesehatan Bali 2022; and Authors' estimates

<sup>1</sup> Component of Human Development Index comprised of life expectancy at birth, expected years of schooling, means years of schooling, and per capita income

<sup>2</sup> Healthy Family Index is composite indicator comprising of 12 health indicators, including access to sanitation and national health insurance, FP and MNCH indicators, and disease treatment coverage. The index is calculated from routine facility Health Management Information System reports - data from April 10<sup>th</sup> 2023 was reported.

<sup>3</sup> Public Health Development Index is composite indicator comprising of 24 health indicators, including prevalence of communicable and non-communicable diseases, service coverage, and proportion of healthy behaviors. The index is calculated from periodic survey data. No data in 2022, hence data in 2018 was reported instead.

<sup>4</sup> Data in 2022 was reported.

<sup>5</sup> Other insurances comprised of regional health insurance, private insurance, and employment-based insurance. The high percentage of other insurance in Badung is driven by regional health insurance, which may not have been integrated with JKN.